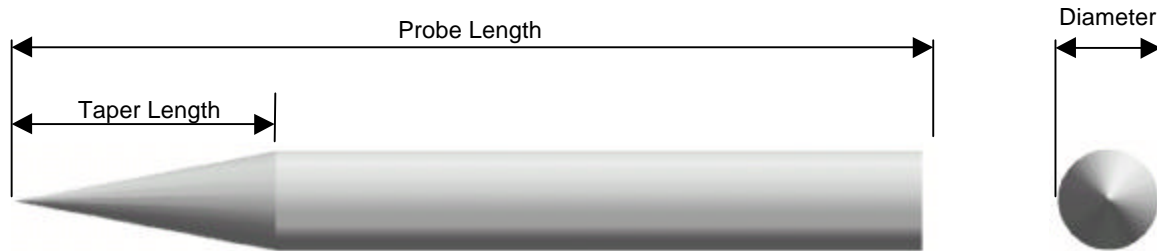


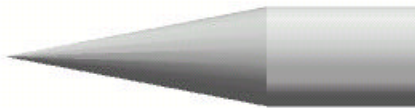
ORDERING INFORMATION FOR PROBE NEEDLES

Probe Material	Platings and Coatings	Etch Length Finish
Tungsten = W	Nickel = NP (W and WR only)	Polish = All materials
Tungsten-Rhenium = WR	Silver = AP (W and WR only)	Matte = (W and WR only)
Beryllium-Copper = BC (silver-plated)	Tin-Dipped (60Sn-40Pb) = TD (all materials)	
NewTek™ = NTK	TIP-M™ Insulation = TIPM (all materials)	
VerTek™ = VTK		
Paliney-7® = P		



Below are examples of how to specify part numbers for probe needles.

To order a SHARP TIP:



WR NP 10 - 150 - 01 X 2.0"

Material = Tungsten-Rhenium
 Plating = Nickel
 Diameter = 10-mil
 Taper Length = 150-mil
 Tip Shape (sharp point)
 Probe Length

To order a RADIUS TIP:



W NP 12 - 178 - 05 X 1.5"

Material = Tungsten
 Plating = Nickel
 Diameter = 12-mil
 Taper Length = 178-mil
 Tip Shape (0.5-mil radius)
 Probe Length



ADVANCED PROBING SYSTEMS, INC.

PO BOX 17548 BOULDER, CO 80308-7548 PH: 303-939-9384 FX: 303-939-9032